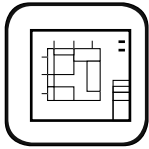


LINEAR PANEL IN T-BAR INSTALLATION

This Visual guide will help you install Twa Panel Systems, Inc. Linear Radiant Panels.

Follow the numbering system on the back of each panel with room and panel designation.

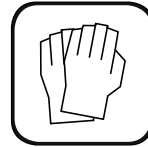
Panels are precut to length when wall to wall measurements were supplied. If panels require cutting please refer to cutting instructions.(filename)



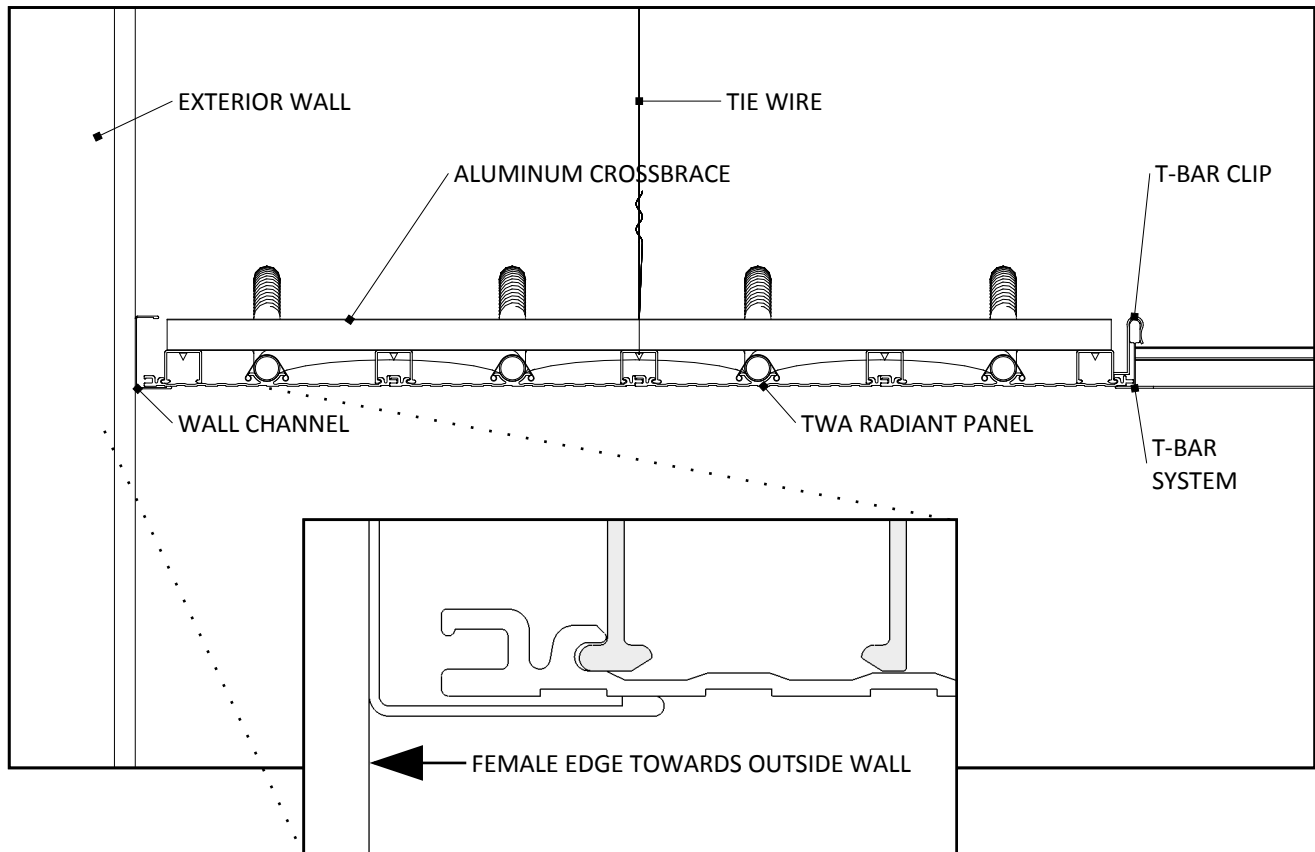
**REFER TO MECHANICAL AND
FACTORY PLANS**

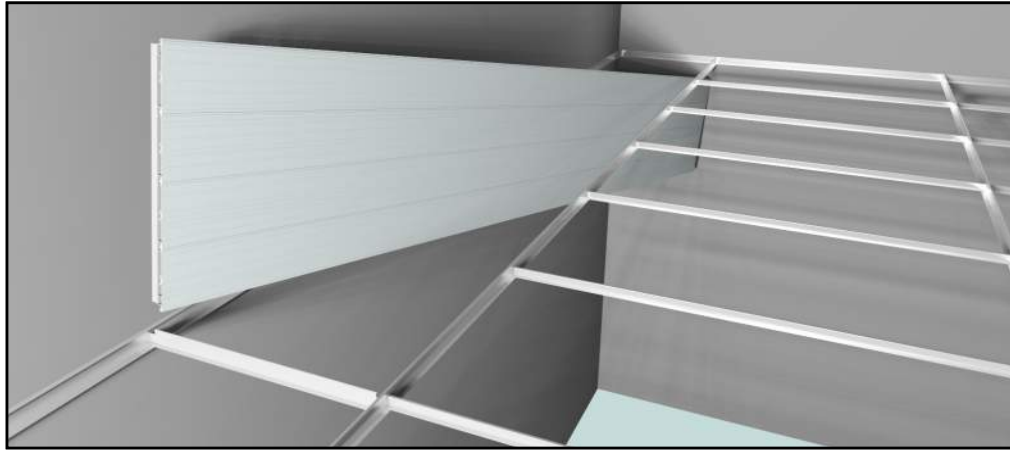


**2 INSTALLERS NEEDED TO LIFT
AND POSITION PANELS IN PLACE**

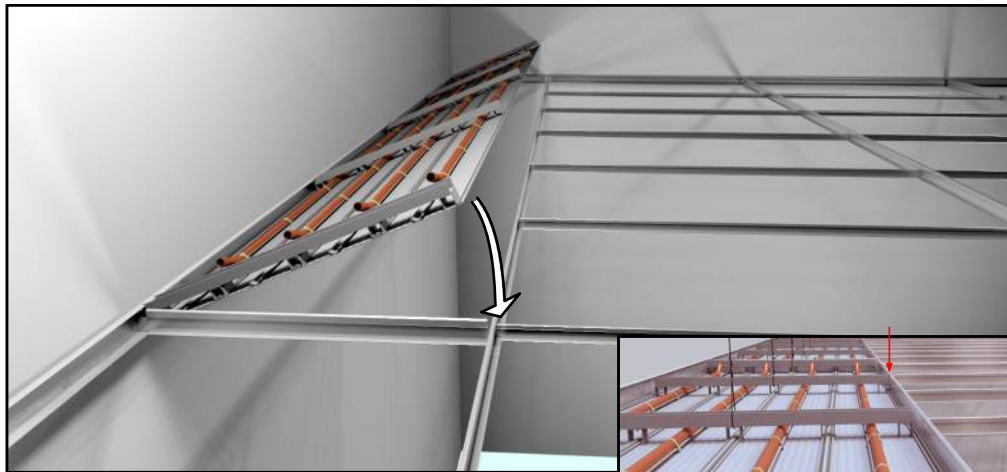
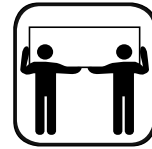


**USE SUPPLIED CLEAN GLOVES
WHEN HANDLING PAINTED PANEL**





A) LIFT PANEL UP INTO
OPENING DIAGONALLY



B) POSITION FEMALE
EDGE ALONG WALL
CHANNEL.
LOWER PANEL INTO
PLACE.



C) INSTALL MINIMUM
OF 2 T-BAR CLIPS PER
PANEL UP TO
6' APART

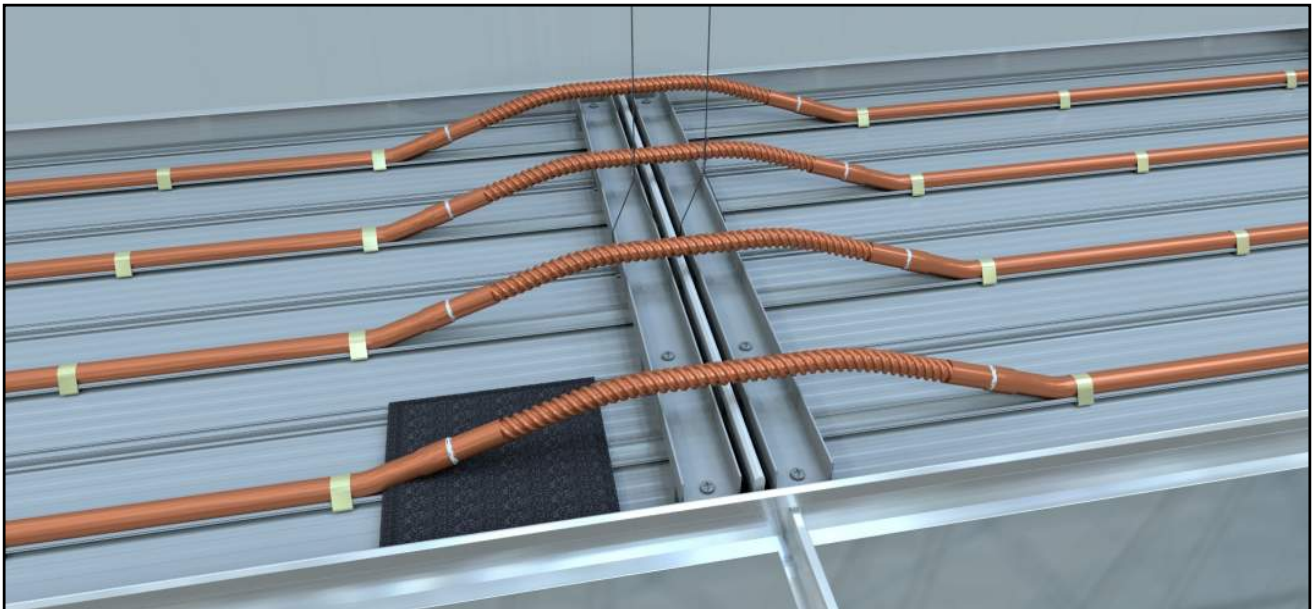


D) ATTACH TIE WIRE
FROM EACH
CROSSBRACE TO
ANCHOR POINT.

1 WIRE PER BRACE FOR
24" OR LESS,
2 HANGERS FOR OVER
24"



E) PROTECT PANEL SURFACE FROM DIRECT HEAT
WITH SOLDERING HEAT SINK



F) MAKE ALL COPPER CONNECTIONS (SUPPLY,
RETURN, AND INTERCONNECTORS)

G) PERFORM AIR PRESSURE TEST AND INSTALL
INSULATION.

PIPING SYSTEM MUST BE VENTED TO AVOID AIRLOCKING